

chloroform
benzene

dimethyl-
sulfoxide

water

N,N-
dimethyl-
formamide

methoxy-
ethanol

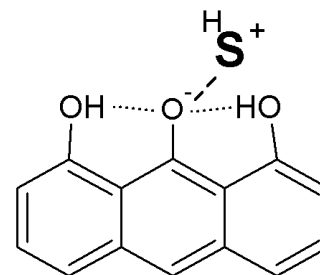
reactivity
(smaller $t_{1/2}$)

+134

+80

+68

+56



(enolate-O)⁻ x
[solvent-H]⁺
ion pair

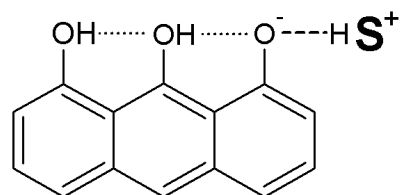
stabilized by rotation of
the protonated solvent

+112

+69

+55

+36



(enolate-O)⁻ x
[solvent-H]⁺
transient state

via intramolecular
proton transfer

+84

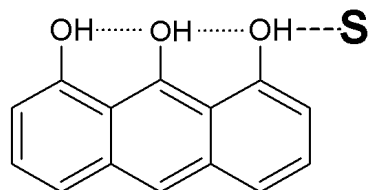
+60

+35

+32

+27

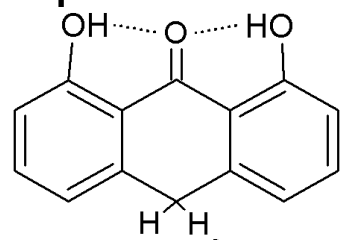
+20



(enol,O-H)x
(solvent)

ΔG^{corr}
(kJ/mol)

0 kJ/mol



(keto,C-H)x
(solvent)